

How to use examQuest

- ① Order licences
- ② Install from CD or website
- ③ Run from desktop icon or START/PROGRAMS/EXAMQUEST

QUESTION FINDER

Question Finder

contains indexed items.

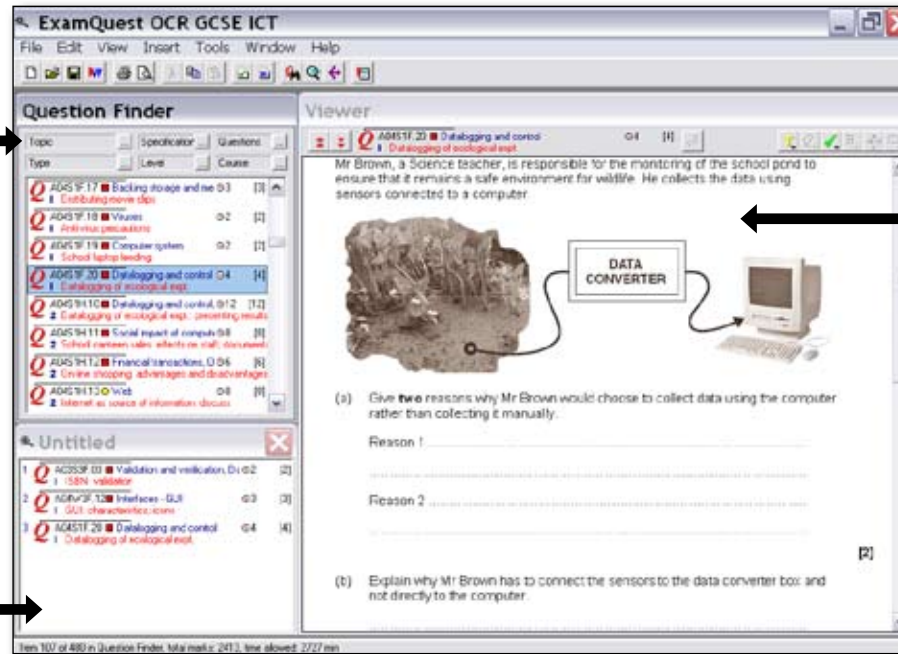
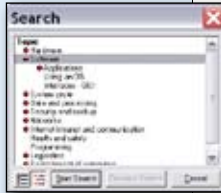
Search by **Topic, Level, Type or Paper/Unit.**

Click on [...] to see the list of available categories.

Click [+] to view sub-topics.




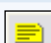
Start search to begin

Continue search to combine categories



VIEWER WINDOW

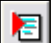




The Viewer displays the question highlighted in the Question Finder. See all the related material by clicking on the buttons (if highlighted) :

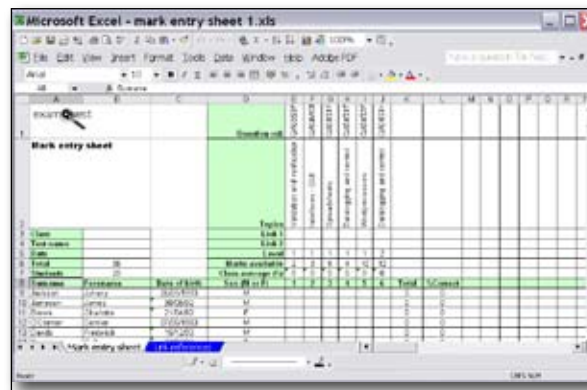
-  Mark scheme
-  Commentary from examiners' reports
-  Link to specification
-  Additional notes

Browse through your selection

The back button

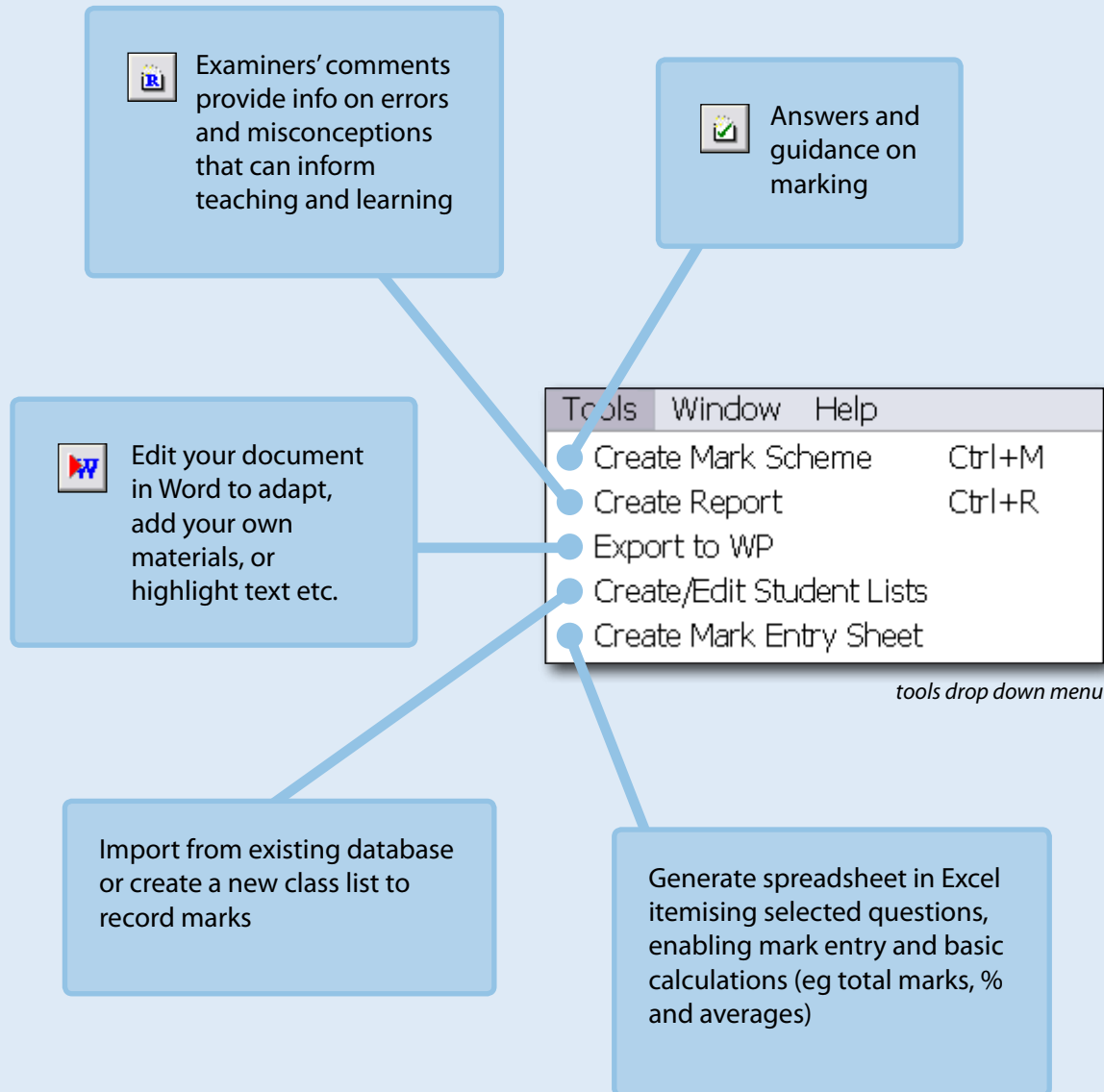
PRINTING AND EDITING

-  Copy the items you want into the *Untitled* document
-  Print preview
-  Get mark scheme
-  Get examiner comment
-  Edit document in Word



MARK ENTRY SHEET...

Opens in Excel detailing questions in your document and space to enter marks. Import or create student lists.



To create an assessment and mark scheme

- 1 Click here to see the topic list
- 2 Click here to select level
- 3 View selected items in the Viewer
- 4 Copy items you want into an untitled document
- 5 Insert title, if required from insert drop down menu
- 6 Print preview (to change sequence, drag & drop)
- 7 Click here for mark scheme
- 8 Click here for commentary

Please visit our website www.examquest.co.uk where you will be able to access a rolling demo and find out exactly what ExamQuest can do for you.